



MyEducationBC

Scheduling Module 11

Rotating a Schedule

April 2019 v1.2

Version History

Version	Date	Description
1.0	6 May 2015	Initial document
1.1	8 May 2015	Correction to rotation chart page 5
1.2	29 Apr 2019	Added hyperlinks to Table of Contents

Confidentiality

This document contains information which is proprietary and confidential to Fujitsu Consulting (Canada) Inc. (including the information of third parties, including but not limited to, Follett of Canada Inc., submitted with their permission). In consideration of receipt of this document, the recipient agrees to treat this information as confidential and to not use or reproduce this information for any purpose other than its evaluation of this proposal or disclose this information to any other person for any purpose, without the express prior consent of Fujitsu Consulting (Canada) Inc. (and any applicable third party.)

Table of Contents

1.0	ROTATIONS	4
1.1	Create a Rotation:	7
2.0	APPLY A ROTATION	8
2.1	Rotate the Schedule:.....	8
2.2	Unrotate the Schedule	9
3.0	TRACK IDS	10
3.1	Assign Track IDs.....	12
4.0	RECALCULATE ENROLLMENT TOTALS	13
4.1	How to Recalculate Enrollment Totals.....	14
5.0	SYNCHRONIZE SCHEDULE	15
5.1	How to Synchronize Schedule	16
6.0	COMMIT MASTER SCHEDULE	16
6.1	Commit Schedule.....	16

1.0 Rotations

A rotated master schedule displays the sections of courses, in the order they actually happen on a given day.

There are two ways schools schedulers build master schedules:

1. The most common way is as a Flat schedule. This is very typical for secondary schools and is a direct reflection of the `scheduling board` used. Four (or 8) periods across the top, with various ways to indicated if the section is Full Year or Semester. After the schedule is complete, some kind of rotation is applied. In BCeSIS, that is through the use of Tumble Patterns. No secondary schools create a `scheduling board` with all of the rotations on it; it is far too complex.
2. The second way is a Rotated schedule. This is often done at the middle school level, again it is usually reflected on a `scheduling board`, but as there is more limited choices at a middle school the complexity of building it this way is reduced.

MyEducation BC has the ability to **build** a Flat schedule and then rotate it, after it is built. The master schedule, student schedules and attendance are all displayed, based on the `rotation` created.

Note: Schools that have double periods and take attendance in both periods must create a rotation.

Consideration should be given to the decision to rotate a schedule or not, as it will impact all users in these areas. The following section shows the results, views and discusses the implications of a using a rotated schedule.

Example School Setup:

Two day schedule (this is how the school chooses to schedule)

Four rotations:

1 st Rotation	2 nd Rotation	3 rd Rotation	4 th Rotation
1	2	3	4
2	3	4	1
3	4	1	2
4	1	2	3

Since this school schedules with 2 days, in order to accommodate these four rotations, the schedule rotates out to an 8 x 8 (4 regular blocks and 4 outside the timetable).

2 x 8			8 x 8											
Periods			Days		Periods									
				1										2
			1											
			2											
			3											
			4											
			5											
			6											
			7											
8														

Using the rotations outlined above, sections scheduled in 1(1), could* rotate as indicated below:

2 x 8			8 x 8											
Periods			Days		Periods									
				1										2
			1											
			2											
			3											
			4											
			5											
			6											
			7											
8														

		1	2	3	4	5	6	7	8
1	D: 2 P: 1	D: 1 P: 2	D: 2 P: 3	D: 1 P: 4	D: 1 P: 1	D: 2 P: 2	D: 1 P: 3	D: 2 P: 4	
2	D: 2 P: 2	D: 1 P: 3	D: 2 P: 4	D: 1 P: 1	D: 1 P: 2	D: 2 P: 3	D: 1 P: 4	D: 2 P: 1	
3	D: 2 P: 3	D: 1 P: 4	D: 2 P: 1	D: 1 P: 2	D: 1 P: 3	D: 2 P: 4	D: 1 P: 1	D: 2 P: 2	
4	D: 2 P: 4	D: 1 P: 1	D: 2 P: 2	D: 1 P: 3	D: 1 P: 4	D: 2 P: 1	D: 1 P: 2	D: 2 P: 3	
5	D: 1 P: 5	D: 2 P: 5	D: 1 P: 5	D: 2 P: 5	D: 1 P: 5	D: 2 P: 5	D: 1 P: 5	D: 2 P: 5	
6	D: 1 P: 6	D: 2 P: 6	D: 1 P: 6	D: 2 P: 6	D: 1 P: 6	D: 2 P: 6	D: 1 P: 6	D: 2 P: 6	
7	D: 1 P: 7	D: 2 P: 7	D: 1 P: 7	D: 2 P: 7	D: 1 P: 7	D: 2 P: 7	D: 1 P: 7	D: 2 P: 7	
8	D: 1 P: 8	D: 2 P: 8	D: 1 P: 8	D: 2 P: 8	D: 1 P: 8	D: 2 P: 8	D: 1 P: 8	D: 2 P: 8	

Sections scheduled in 1(2), could* rotate as indicated below:

2 x 8			8 x 8								
Days			Days								
	1	2		1	2	3	4	5	6	7	8
Periods	1			D: 2 P: 1	D: 1 P: 2	D: 2 P: 3	D: 1 P: 4	D: 1 P: 1	D: 2 P: 2	D: 1 P: 3	D: 2 P: 4
	2			D: 2 P: 2	D: 1 P: 1	D: 2 P: 4	D: 1 P: 3	D: 1 P: 2	D: 2 P: 1	D: 1 P: 4	D: 2 P: 3
	3			D: 2 P: 3	D: 1 P: 4	D: 2 P: 1	D: 1 P: 2	D: 1 P: 3	D: 2 P: 4	D: 1 P: 1	D: 2 P: 2
	4			D: 2 P: 4	D: 1 P: 3	D: 2 P: 2	D: 1 P: 1	D: 1 P: 4	D: 2 P: 3	D: 1 P: 2	D: 2 P: 1
	5			D: 1 P: 5	D: 2 P: 5	D: 1 P: 5	D: 2 P: 5	D: 1 P: 5	D: 2 P: 5	D: 1 P: 5	D: 2 P: 5
	6			D: 1 P: 6	D: 2 P: 6	D: 1 P: 6	D: 2 P: 6	D: 1 P: 6	D: 2 P: 6	D: 1 P: 6	D: 2 P: 6
	7			D: 1 P: 7	D: 2 P: 7	D: 1 P: 7	D: 2 P: 7	D: 1 P: 7	D: 2 P: 7	D: 1 P: 7	D: 2 P: 7
	8			D: 1 P: 8	D: 2 P: 8	D: 1 P: 8	D: 2 P: 8	D: 1 P: 8	D: 2 P: 8	D: 1 P: 8	D: 2 P: 8
Periods			Periods								

*The choice of how the schedule rotates out is dependent on the school's scheduler. There is no one way to create a Rotation.

1.1 Create a Rotation:

1. Log on to the Build view.
2. Click the **Scenario** tab.
3. Select the scenario you want to rotate, and click the **Rotations** side-tab.
4. On the **Options** menu, click **Add**. The New Schedule Rotation page appears:

South Kamloops Secondary 2015-2016
SM11- 2 - Rotated

Pages Scenario Workspace Courses Student Staff Rooms Rules Global

Options Reports Help

Scenarios :: SM11- 2 - Rotated :: New Schedule Rotation

Save Cancel Default Template

Details

Preferences

Terms

Days

Periods

Rotations Details

Bell Schedules

Identifier * ROTATION 1

Description ROTATION 1

Rotated dimensions Days Periods 8 8 Set

Differs by term

Original Schedule		Rotated Schedule											
		Days		Days									
			1	2		1	2	3	4	5	6	7	8
Periods	1		1										
	2												
	3												
	4												
	5												
	6												
	7												
	8												

Clear

Enter a name in the **Identifier** field.

Enter a **Description**.

Enter the **Rotated dimensions**

5. Select the **Differs by term** checkbox if you want to define a different rotation for each schedule term. If you select the checkbox, the **Select Term** drop-down appears. Select the first term you want to define a map for.

Note: If your school has different Rotations, in different Terms, please contact Level 1 for further support.

6. On the original schedule matrix on the left-hand side of the page, select a period and day. Then, on the rotated schedule matrix on the right-hand side of the page, select the periods and days in which you want that period to meet. Repeat this process for all periods and days.
7. Once complete click **Save**.

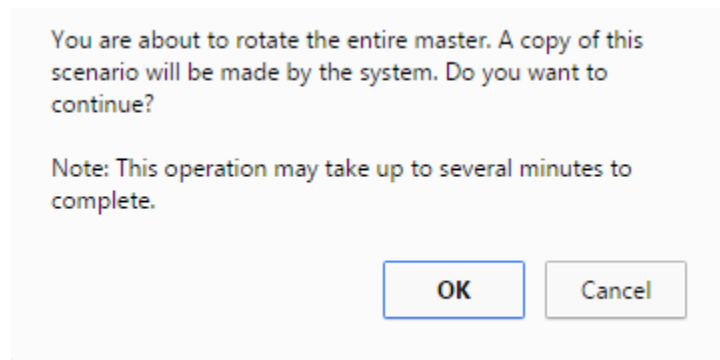
2.0 Apply a Rotation

After you build the master schedule and define the rotation map, you can rotate the master schedule, in the Build view. This allows you to verify the rotation is correct and is what you expected.

Note: The system automatically creates a copy of the current schedule and names it – current schedule (unrotated). This is done for safety; if there is an error in the rotation mapping, you might ruin the schedule you originally built. If this happens, you can use the original, unrotated copy and try again

2.1 Rotate the Schedule:

1. Log on to the **Build** view.
2. Click the **Workspace** tab.
3. On the **Options** menu, select **Rotation**, then **Rotate Schedule**. The application confirms you want to continue with the following message:



When the rotation is complete, for each section on the **Workspace**, the application displays the rotated schedule in the **Schedule** expression column:

South Kamloops Secondary 2015-2016
SM11- 3 - Rotations: Rotated

Pages Scenario **Workspace** Courses Student Staff Rooms Rules Global

Options Reports Help

Sections

Sections 1:AAR-12-001 0 of 254 selected

Course	SecNo	ScheduleTerm > Code	Unrotated Schedule	Schedule	TrackID	Primary Staff > Name	Primary Room > Num
<input type="checkbox"/> AAR-12-001	001	S1	4(1-2)	1(4.8) 2(3.7) 3(2.6) 4(1.5)			J207
<input type="checkbox"/> ABIO-12-001	001	S1	4(1-2)	1(4.8) 2(3.7) 3(2.6) 4(1.5)			J209 Sci
<input type="checkbox"/> ACHE-12-001	001	FY	1(1)	1(5) 2(2) 3(7) 4(4)		Addey, Rowe	
<input type="checkbox"/> AELC-12-001	001	S1	1(1-2)	1(1.5) 2(2.6) 3(3.7) 4(4.8)			J206
<input type="checkbox"/> MAF-11-001	001	S1	4(1-2)	1(4.8) 2(3.7) 3(2.6) 4(1.5)		Aven, Tasha	K117-Art
<input type="checkbox"/> MAF-11-002	002	S2	3(1-2)	1(3.7) 2(4.8) 3(1.5) 4(2.6)		Aven, Tasha	K117-Art

2.2 Unrotate the Schedule

If, after analysis of the master schedule and student schedules, the rotation applied is not correct you can Unrotate the schedule.

Note: You must Unrotate the schedule that was Rotated. You cannot Unrotate a **Copy** of a Scenario that was rotated.

1. Click the **Workspace** tab.
1. On the **Workspace** tab
2. Select **Options > Rotation > Unrotate Schedule**

South Kamloops Secondary 2015-2016
SM11- 4 - Rotations: UnRotated SM11-3

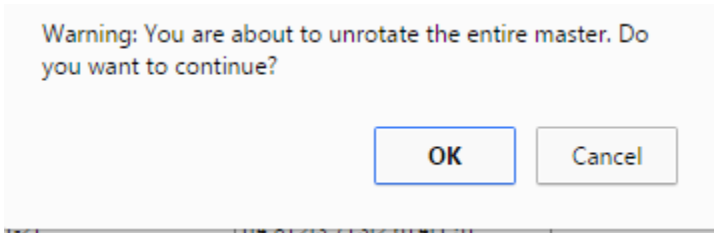
Pages Scenario **Workspace** Courses Student Staff Rooms Rules Global

Options Reports Help

Sections 1:AAR-12-001 0 of 254 selected

Course	SecNo	ScheduleTerm > Code	Unrotated Schedule	Schedule	Primary Staff > Name	Primary Room > Num	Inclusion?	Total	Max	SecType	Platoon	SysRank
<input type="checkbox"/> AAR-12-001	001	S1	4(1-2)	1(4.8) 2(3.7) 3(2.6) 4(1.5)		J207	N	4	30			209
<input type="checkbox"/> ABIO-12-001	001	S1	4(1-2)	1(4.8) 2(3.7) 3(2.6) 4(1.5)		J209 Sci	N	5	30			73
<input type="checkbox"/> ACHE-12-001	001	FY	1(1)	1(5) 2(2) 3(7) 4(4)	Addey, Rowe		N	0	30			0
<input type="checkbox"/> AELC-12-001	001	S1	1(1-2)	1(1.5) 2(2.6) 3(3.7) 4(4.8)		J206	N	5	30			207
<input type="checkbox"/> MAF-11-001	001	S1	4(1-2)	1(4.8) 2(3.7) 3(2.6) 4(1.5)	Aven, Tasha	K117-Art	N	0	30			211
<input type="checkbox"/> MAF-11-002	002	S2	3(1-2)	1(3.7) 2(4.8) 3(1.5) 4(2.6)	Aven, Tasha	K117-Art	N	0	30			213
<input type="checkbox"/> MAF-12-003	003	S2	1(1-2)	1(1.5) 2(2.6) 3(3.7) 4(4.8)	K-Libr		N	28	30			214
<input type="checkbox"/> MCH-12-001	001	S1	4(1-2)	1(4.8) 2(3.7) 3(2.6) 4(1.5)	Aven, Tasha	K117-Art	N	28	30			216
<input type="checkbox"/> MCH-12-002	002	S2	3(1-2)	1(3.7) 2(4.8) 3(1.5) 4(2.6)	Aven, Tasha	K117-Art	N	28	30			218
<input type="checkbox"/> MCH-12-003	003	S1	3(1-2)	1(3.7) 2(4.8) 3(1.5) 4(2.6)		K117-Art	N	20	30			221
<input type="checkbox"/> MCH-12-001	001	S1	4(1-2)	1(4.8) 2(3.7) 3(2.6) 4(1.5)		J211 Sci	N	24	30		Div01	80
<input type="checkbox"/> MCH-12-002	002	S2	1(1-2)	1(1.5) 2(2.6) 3(3.7) 4(4.8)		J209 Sci	N	24	30			83

3. The following message will appear, ensuring confirmation:



- Once complete the **Schedule** column will show the flat schedule expression, that was originally created:

South Kamloops Secondary 2015-2016
Copy of SM11- 2 - Rotations: Built & Unrotated (Pr)

Change View Select School Set Preferences Log Off Build View

Pages Scenario Workspace Courses Student Staff Rooms Rules Global

Options Reports Help

Sections

Sections 1: AAR--12-001 0 of 225 selected All Sections

Course	SecNo	ScheduleTerm > Code	Unrotated Schedule	Schedule	PrimaryStaff > Name	PrimaryRoom > Num	Inclusion?	Total	Max	SecType	Platoon	SysRank
AAR--12-001	001	S1		4(1-2)		J207	N	4	30			209
ABIO-12-001	001	S1		4(1-2)		J209 Sci	N	5	30			73
AELC-12-001	001	S1		1(1-2)		J208	N	5	30			207
MAF--11-001	001	S1		4(1-2)	Aven, Tasha	K117-Art	N	0	30			211
MAF--11-002	002	S2		3(1-2)	Aven, Tasha	K117-Art	N	0	30			213
MAF--11-003	003	S2		1(1-2)		K-Libr	N	28	30			214
MAF--12-001	001	S1		4(1-2)	Aven, Tasha	K117-Art	N	28	30			216
MAF--12-002	002	S2		3(1-2)	Aven, Tasha	K117-Art	N	28	30			218
MAF--12-003	003	S1		3(1-2)		K117-Art	N	20	30			221
MCH--12-003	003	S2		4(1-2)		J215 Sci	N	24	30			110
MCH--12-004	004	S2		3(1-2)		J214 Sol	N	24	30			112
MDNC-09-001	001	S1		4(1-2)	Addey, Rowe	J115-Dance	N	0	30		Div01	215

3.0 Track IDs

Track IDs are a way to assist in identifying the original Unrotated schedule expression of a section. If Track IDs are created they will be displayed in the lower right hand corner of the Matrix view on a student schedules:

Student > Schedule > Matrix view:

South Kamloops Secondary 2015-2016
SM11- 5 - Rotations: TrackIDs Unassigned

Change View Select School

Pages Scenario Workspace Courses Student Staff Rooms Rules Global

Options Reports Help

Students :: 272169 - Alberti, Elvina

<< List view

Details

Requests

Schedule Details

Conflicts

Workspace

Schools

Transcript

Documents

Rules

Snapshots

	1 - 1	2 - 2	3 - 3	4 - 4	5 - 5	6 - 6	7 - 7
1.1	MSC-10-004 SCIENCE 10 J209 Sci 1(1-2)	MVAG-10-001 VISUAL ARTS 10: GENERAL K117-Art 2(1-2)		MPE-10-008 PHYSICAL EDUCATION 10 JGym1 4(1)	MSC-10-004 SCIENCE 10 J209 Sci 1(1-2)	MVAG-10-001 VISUAL ARTS 10: GENERAL K117-Art 2(1-2)	MPLAN10-005 PLANNING 10 J203 3(1)
2.2	MVAG-10-001 VISUAL ARTS 10: GENERAL K117-Art 2(1-2)	MSC-10-004 SCIENCE 10 J209 Sci 1(1-2)	MFMP-10-006 FOUNDATIONS OF MATH AND PRE- CALCULUS 10 J118 4(2)	MPLAN10-005 PLANNING 10 J203 3(1)	MVAG-10-001 VISUAL ARTS 10: GENERAL K117-Art 2(1-2)	MSC-10-004 SCIENCE 10 J209 Sci 1(1-2)	MPE-10-008 PHYSICAL EDUCATION 10 JGym1 4(1)
3.3		MPE-10-008 PHYSICAL EDUCATION 10 JGym1 4(1)	MSC-10-004 SCIENCE 10 J209 Sci 1(1-2)	MVAG-10-001 VISUAL ARTS 10: GENERAL K117-Art 2(1-2)	MPLAN10-005 PLANNING 10 J203 3(1)	MFMP-10-006 FOUNDATIONS OF MATH AND PRE- CALCULUS 10 J118 4(2)	MSC-10-004 SCIENCE 10 J209 Sci 1(1-2)
4.4	MFMP-10-006 FOUNDATIONS OF MATH AND PRE- CALCULUS 10 J118 4(2)	MPLAN10-005 PLANNING 10 J203 3(1)	MVAG-10-001 VISUAL ARTS 10: GENERAL K117-Art 2(1-2)	MSC-10-004 SCIENCE 10 J209 Sci 1(1-2)	MPE-10-008 PHYSICAL EDUCATION 10 JGym1 4(1)		MVAG-10-001 VISUAL ARTS 10: GENERAL K117-Art 2(1-2)

Student > Schedule > Workspace > Matrix view:

South Kamloops Secondary 2015-2016
SM11- 5 - Rotations: TrackIDs Unassigned

Change View

Pages Scenario Workspace Courses Student Staff Rooms Rules Global

Options Reports Help

Students :: 272169 - Alberti, Elvina

Details

Requests

Schedule

Conflicts

Workspace

Schools

Transcript

Documents

Rules

Snapshots

Course Requests

Allow over max

Primary

- MDRR-10 DRAMA 10: THEATRE PERFORMANCE
- MEN-10 ENGLISH 10
- MFMP-10 FOUNDATIONS OF MATH AND PRE-CALCULUS 10
- MGT- GRADUATION TRANSITIONS
- MPE-10 PHYSICAL EDUCATION 10
- MPLAN10 PLANNING 10
- MSC-10 SCIENCE 10
- MSS-10 SOCIAL STUDIES 10
- MVAG-10 VISUAL ARTS 10: GENERAL

Alternate

Show courses excluded from scheduling

Number Add

Select... Drop All Update

Student Schedule (59% scheduled - Class credits: 36.0)

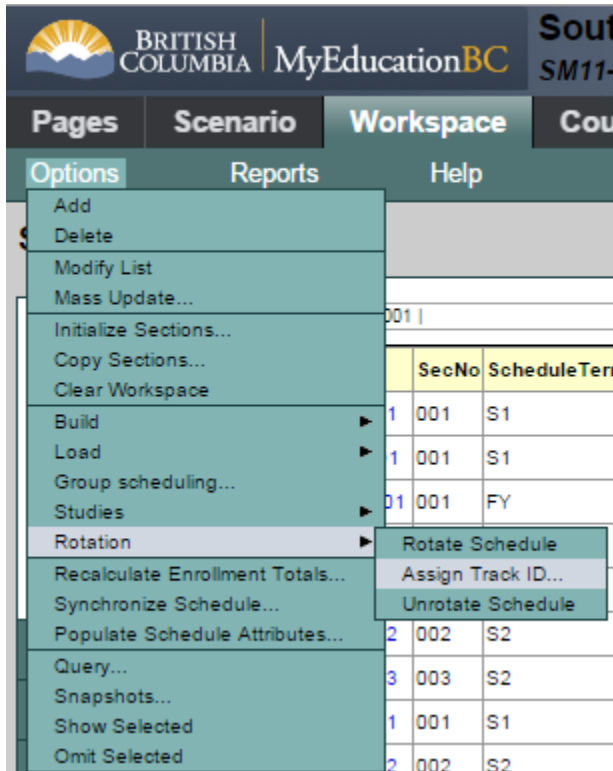
Term code S1 Work mode Manual

	1	2	3	4	5	6
1	MSC-10-004 SCIENCE 10 J209 Sci 1(1-2)	MVAG-10-001 VISUAL ARTS 10: GENERAL K117-Art 2(1-2)		MPE-10-008 PHYSICAL EDUCATION 10 JGym1 4(1)	MSC-10-004 SCIENCE 10 J209 Sci 1(1-2)	
2	MVAG-10-001 VISUAL ARTS 10: GENERAL K117-Art 2(1-2)	MSC-10-004 SCIENCE 10 J209 Sci 1(1-2)	MFMP-10-006 FOUNDATIONS OF MATH AND PRE- CALCULUS 10 J118 4(2)	MPLAN10-005 PLANNING 10 J203 3(1)	MVAG-10-001 VISUAL ARTS 10: GENERAL K117-Art 2(1-2)	MSC-10-004 SCIENCE 10 J209 Sci 1(1-2)
3		MPE-10-008 PHYSICAL EDUCATION 10 JGym1 4(1)	MSC-10-004 SCIENCE 10 J209 Sci 1(1-2)	MVAG-10-001 VISUAL ARTS 10: GENERAL K117-Art 2(1-2)	MPLAN10-005 PLANNING 10 J203 3(1)	MFMP-10-006 FOUNDATIONS OF MATH AND PRE- CALCULUS 10 J118 4(2)

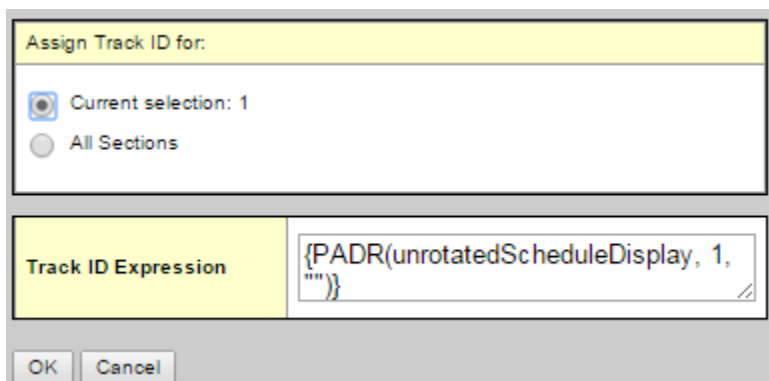
3.1 Assign Track IDs

In the Build view:

1. Click the **Workspace** tab.
2. Select **Options > Rotation > Assign Track ID...**



3. The **Assign TrackID** dialogue box appears:



Note: This can be run by **Current selection** which would be advisable, as individuals are learning the implications.

- The default value in the **Track ID Expression** tells the system to 'Use the 1 value in the unrotated Schedule expression'. This will result in the first character of the period being displayed. Therefore, this expression will not work for a school that has more than 9 periods.

To display both characters of the period, the expression would have to be modified:
 {PADR(unrotatedScheduleDisplay, 2, "")} .

Note: This will display the (, for expressions with one period. E.g. 1(or 2(etc.

If the school would like to display ALL characters of the schedule expression, use the following expression:

{unrotatedScheduleDisplay}

4.0 Recalculate Enrollment totals

You might need to recalculate enrollment totals so that they equal the number of students enrolled in a section.

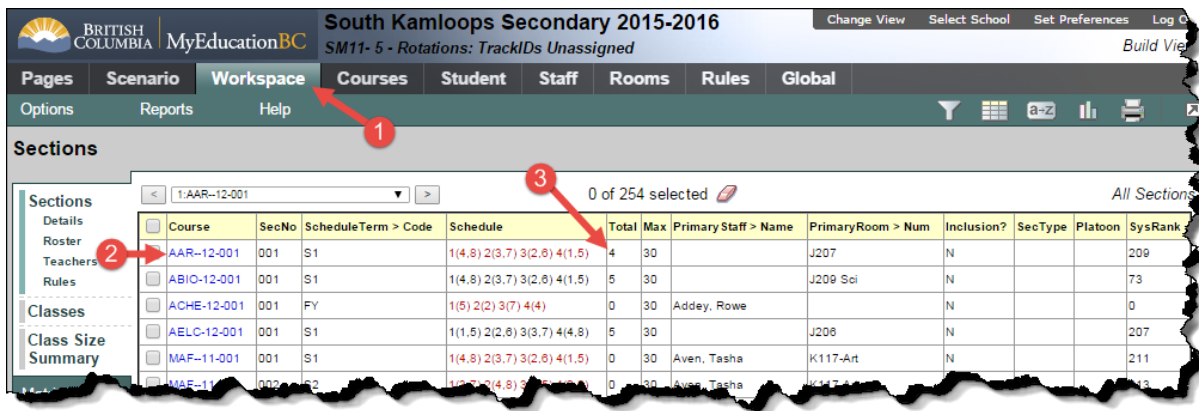
You will notice this if a roster count, of a section, does not equal the **Total** value on the **Workspace**, for a section.

In the example below the **Roster** for a section shows **5** students:

The screenshot shows the MyEducationBC interface for South Kamloops Secondary 2015-2016. The 'Workspace' tab is active, showing a list of sections for 'AAR--12-001'. The 'Roster' tab is selected, displaying a table with 5 students. Red arrows indicate: 1. The section ID 'AAR--12-001', 2. The 'Roster' tab in the left sidebar, and 3. The '0 of 5 selected' count.

Pupil #	Name	YOG	Homeroom	Inclusion?
<input type="checkbox"/> 309758	Alex, Geneve	2018	K110	N
<input type="checkbox"/> 1177955	Axibal, Bryon	2018	K210	N
<input type="checkbox"/> 398258	Bacala, Clinton	2018	K112	N
<input type="checkbox"/> 408022	Bazuk, Erna	2018	K114	N
<input type="checkbox"/> 398239	Beadle, Rozi	2018	K210	N

The **Total** value on the **Workspace** shows **4** students:

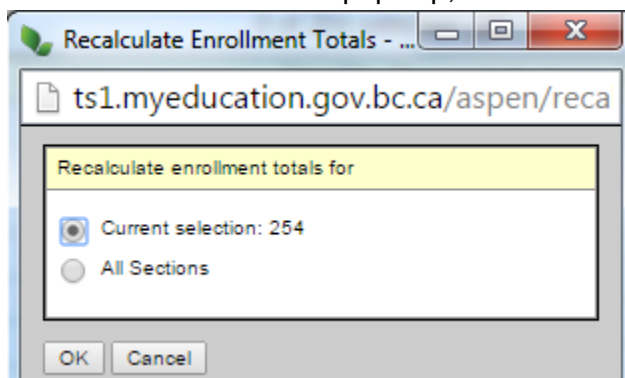


The numbers might be different if you or another build user manually changed the value in the 'Enrollment total' field for a section on the **Workspace** tab.

4.1 How to Recalculate Enrollment Totals

In the Build view:

1. Click the **Workspace** tab.
2. Select **Options > Recalculate Enrollment Totals...**
3. The **Recalculate** window pops up, this can be run for *Current Selection* or *All Sections*



4. Click **OK**.

5.0 Synchronize Schedule

If you notice that the schedule expression tied to a course does not match the detail of the schedule expression, you need to synchronize them. This will be indicated with a blue exclamation mark at the end of the **Schedule** expression, in the **Workspace**:

South Kamloops Secondary 2015-2016
SM11- 6 - Rotations: Sync.Sched.

Pages Scenario Workspace Courses Student Staff Rooms Rules Global

Options Reports Help

Sections

Sections 0 of 38 selected Custom Selection

Course	SecNo	ScheduleTerm > Code	Unrotated Schedule	Schedule	TrackID	Primary Staff > Name	PrimaryRoom > Num	Inclusion?	Total	Max	SecType	Platoon	SysRank
ACHE-12-001	001	FY		1(1) !		Addey, Rowe		N	0	30			0
AELC-12-001	001	S1		1(1-2) !			J208	N	5	30			207
MAF-11-001	001	S1		4(1-2)		Aven, Tasha	K117-Art	N	0	30			211
MAF-11-002	002	S2		3(1-2)		Aven, Tasha	K117-Art	N	0	30			213
MAF-11-003	003	S2		1(1-2) !			K-Libr	N	28	30			214
MAF-12-001	001	S1		4(1-2)		Aven, Tasha	K117-Art	N	28	30			216
MAF-12-002	002	S2		3(1-2)		Aven, Tasha	K117-Art	N	28	30			218

In the above example the reason for the discrepancy is the period ID has been changed to an alpha character in the **Scenario > Periods > Period 1 Details > ID**:

South Kamloops Secondary 2015-2016
SM11- 6 - Rotations: Sync.Sched.

Pages Scenario Workspace Courses Student Staff Rooms Rules Global

Options Reports Help

Scenario 1 SM11- 6 - Rotations: Sync.Sched.

Details 0 of 8 selected

Number	ID
1	A
2	2
3	3
4	4
5	5
6	6
7	7
8	8

5.1 How to Synchronize Schedule

Note: Usually, you would not use this option without the help of Level 2 support services. The first time this is run, only 1 section should be selected, to ensure the desired outcome is achieved.

In the Build view:

1. Click the **Workspace** tab.
2. Select **Options > Synchronize Schedule...** The Synchronize Schedule dialog box appears.
3. Select if you want to synchronize your matrix to your expression or your expression to your matrix, depending on which is correct.

Note: In this example the **Matrix** had been changed after the schedule expression was created. Therefore the process needs to be run for **Matrix to expression**. This is the most common way this process is run.

4. Click OK. The system updates the incorrect matrices or expressions.

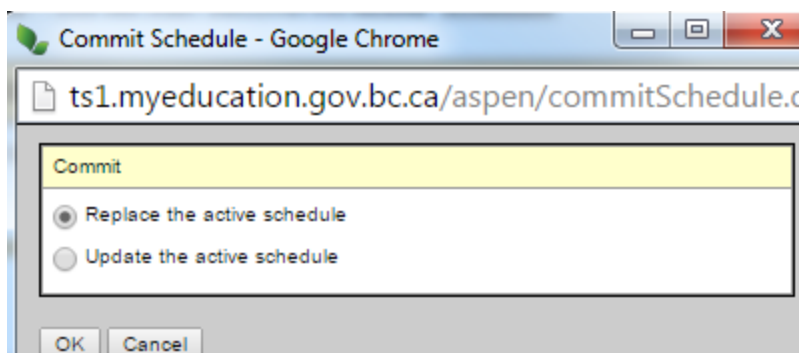
6.0 Commit Master Schedule

After the **End of Year Rollover (EYOR)** process is complete, one **Scenario** from the Build view must be **Committed** – this will then become the **Active Schedule**.

6.1 Commit Schedule

In the Build view:

1. Click the **Scenario** tab.
2. Select the **Scenario** that you would like to commit, to go into the **Details**.
3. Click **Options > Commit Schedule...** ... The Commit Schedule dialog box appears:



4. Select the appropriate option, **Replace the active schedule** or **Update the active schedule** (if you have already committed the schedule, made changes and want to only re-commit the changes).

Note: This topic will be covered further, as part of **End of Year Rollover (EYOR)** and **School Start-up** Learning Events.